

# HYC50

## Important notes for installation

In order to carry out a safe installation & commissioning and to preserve the warranty claim for the product it is crucial to respect the following technical guidelines. It is also mandatory to submit a commissioning protocol, which is available on our document platform hyperdoc.

In addition to this document, it must be adhered to the installation video as well as the operating and installation manual, which can be viewed on our document platform hyperdoc. If you do not yet have access to the platform, please use the following registration link:

[account.hypercharger.it/register](https://account.hypercharger.it/register)

### ATTENTION

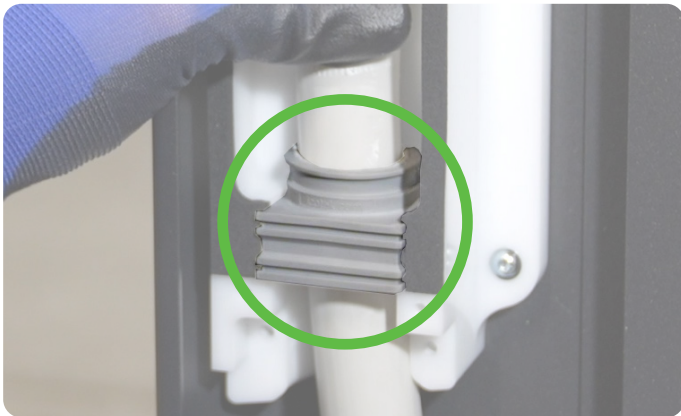
It is the responsibility of the company carrying out the installation and commissioning to ensure compliance with the country-or region-specific safety regulations or laws in force at the place of installation. alpitronic accepts no liability for correct compliance with the specific safety regulations.

## Electrical installation

### ATTENTION

During installation and commissioning, the mains supply must be disconnected and secured with a lock-out/tag-out device against being switched on again!

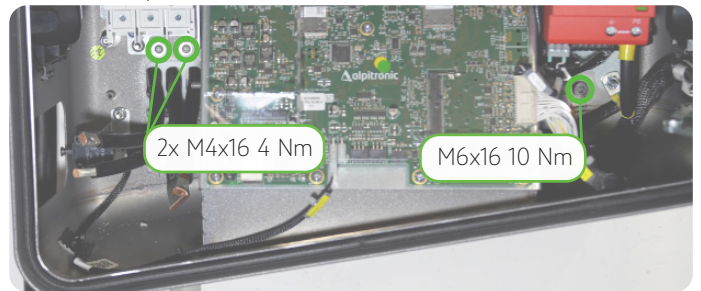
- It is mandatory to use the cable entry to connect the mains cable to the HYC50. The direct connection of the mains cable to the HYC50 is not permitted and can lead to significant damages on the charging station.
- Ensure that the mains cable is routed through the cable seal as a whole (diameter range: 24-35 mm)! The passing of individual conductors is not permitted and can lead to significant damages on the charging station as the sealing is not ensured.



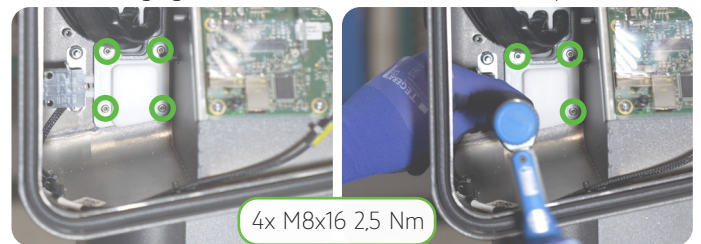
- Only L1, L2, L3 & PE are to be connected to the HYC50 (no neutral conductor!), the required cross section range for these is 25 – 50 mm<sup>2</sup>.
- If a RCD (residual current-operated protective device) is used, only install devices of Type B or B+ ( $I_{\Delta n} = 100 \text{ mA}$ )!

## Mechanical installation

- It is mandatory to use the crane plate to lift the HYC50 by crane. Don't forget to remove it after installation!
- Make sure to fixate the hypercharger properly to the wall mount / pedestal!



- After a successful electrical installation, it is crucial to mount the protection cover (M4x16 Torque: 2.5 Nm) from the cable entry. If not installed properly, this can lead to significant damages on the charging station as it's not sealed hermetically.



- Make sure that the locking lid is mounted the right way round



### REMARK

If you encounter any problems, please do not hesitate to contact our hypercharger support team: [support@hypercharger.it](mailto:support@hypercharger.it) or +39 0471 1961 333